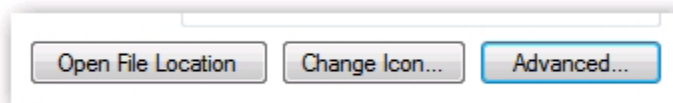
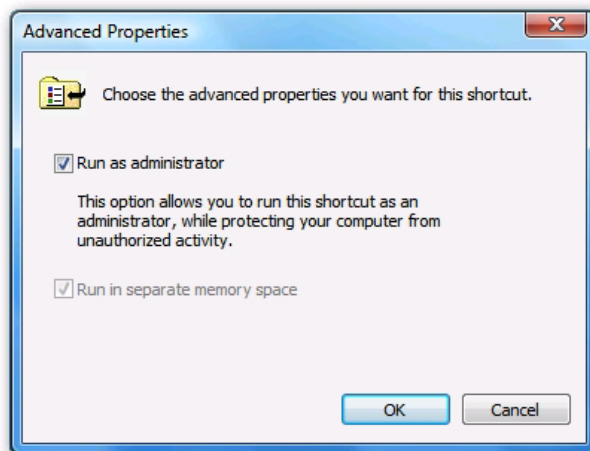


Please note if you are running Windows Vista you must run the software in 'Admin' mode before creating the license.

To set this property, just right-click on any shortcut, and click the Advanced button on the Shortcut page to get to the Advanced Properties dialog.



You'll see a dialog with a checkbox for "Run as administrator".



To enter a new license:

1. Click **Licensing** on the **Tools** menu, FlexMail opens the **License Maintenance Wizard**. The wizard will guide you through the process of entering your license.
2. Click **Next** to start the wizard.
3. In the **License Maintenance Task** step select the first selection button **Enter a new License....** and click **Next** to continue.
4. The **Enter New License** step displays a **Version** and a **Site Code**.

You must now email the Site Code to support@ams-gb.com

You will then receive a Site Key by return

5. Enter the license key that your dealer generated for you in the **Site Key** box.

6. Click **Next** to validate the **Site Key** that you have entered to authorize the program.

If the Site Key you entered was correct, the Wizard will display a screen with information about your current authorization status, if not, you will be asked to re-enter the Site Key.

7. Click **Finish** to complete the authorization process.

Once the software is installed it is very important that the software is updated to the latest service pack.

To update online run FlexMail then click on 'Help' then 'Check for Updates' and then follow the instructions.

To download and manually install please go to the following website:

www.flex-systems.com

Click on 'User Support'

Log in to download or create a new account.