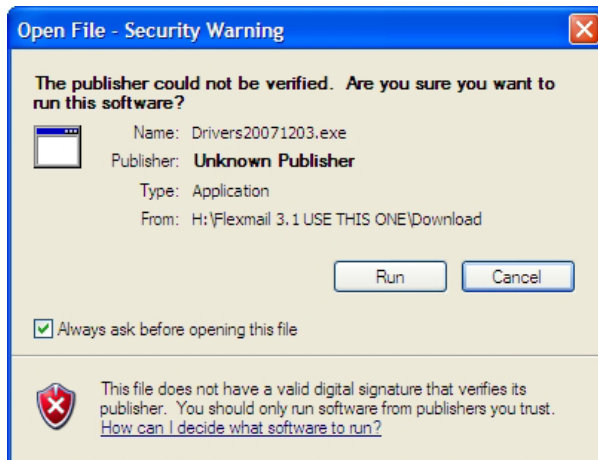


## FlexMail 3 Printer Driver Installation

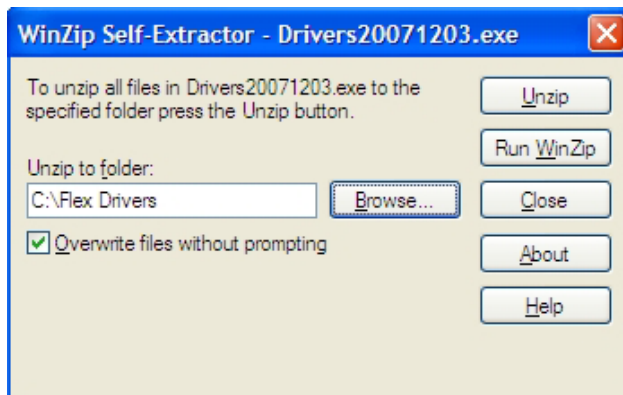
Download the latest printer driver, the last version can be downloaded from our website:  
<http://www.mailing-addressing-machines.co.uk/pdrequest.htm>

If the downloaded file is an '.exe.' file follow steps 1 to 3, if it is a '.zip' file extract the files onto a folder on your PC.

1. Once downloaded double click the '.exe' file to extract the files onto a folder on your PC



2. Click 'Run' to proceed then 'Browse' to select a location to extract, i.e. 'C:\Flex Drivers' (You will need to create the folder before extracting if it doesn't already exist). Leave the 'Overwrite files with prompting' box ticked.



3. Click 'Unzip' to proceed. You will see the following confirmation when complete. Click 'OK' then 'Close'.



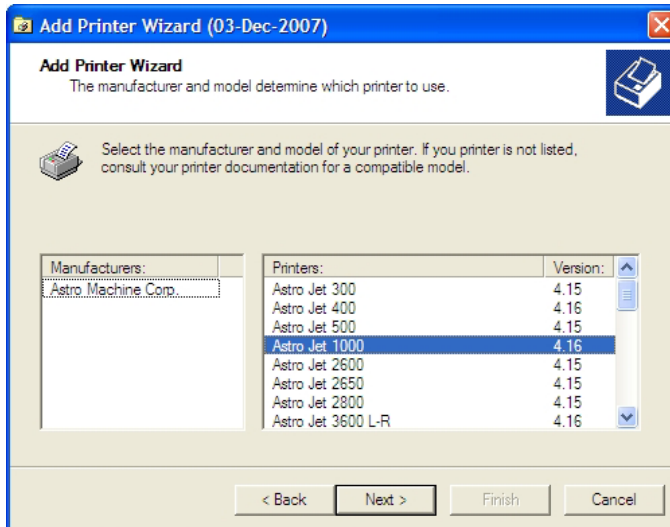
4. Open the folder where the files were extracted to and double click 'Setup.exe' to begin installation. Click 'Next'.



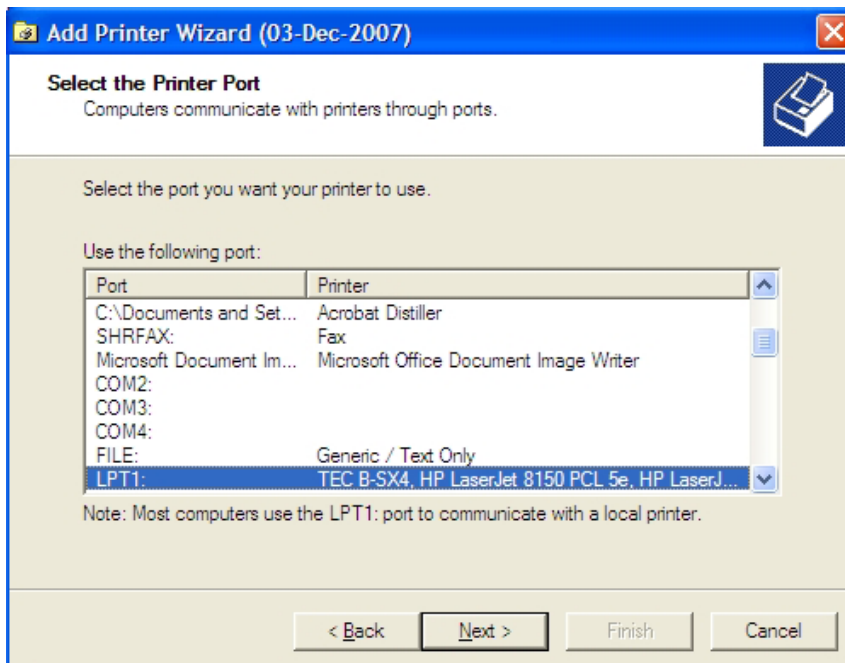
5. Enter a Name and Company, your product number will depend on the printer driver being installed, if you require a product number please email [support@ams-gb.com](mailto:support@ams-gb.com) Click 'Next'



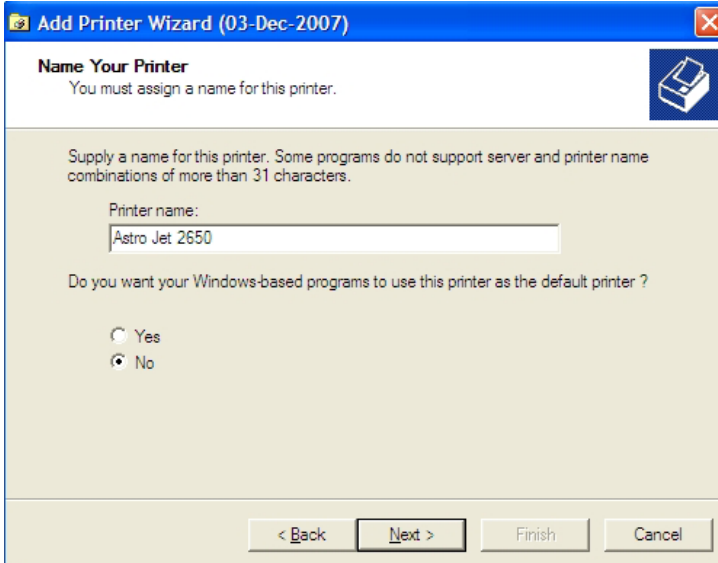
6. Select the correct printer model no. that you want to install, click 'Next'



7. Select the printer port that is used to connect the printer to the PC. Click 'Next'



8. Select if you want the printer to be the Windows default printer. Click 'Next'



9. Click 'Finish' to complete or 'Next' if you need to install an additional printer..



Your printer should now be installed.